

114°03.000' W

114°02.000' W

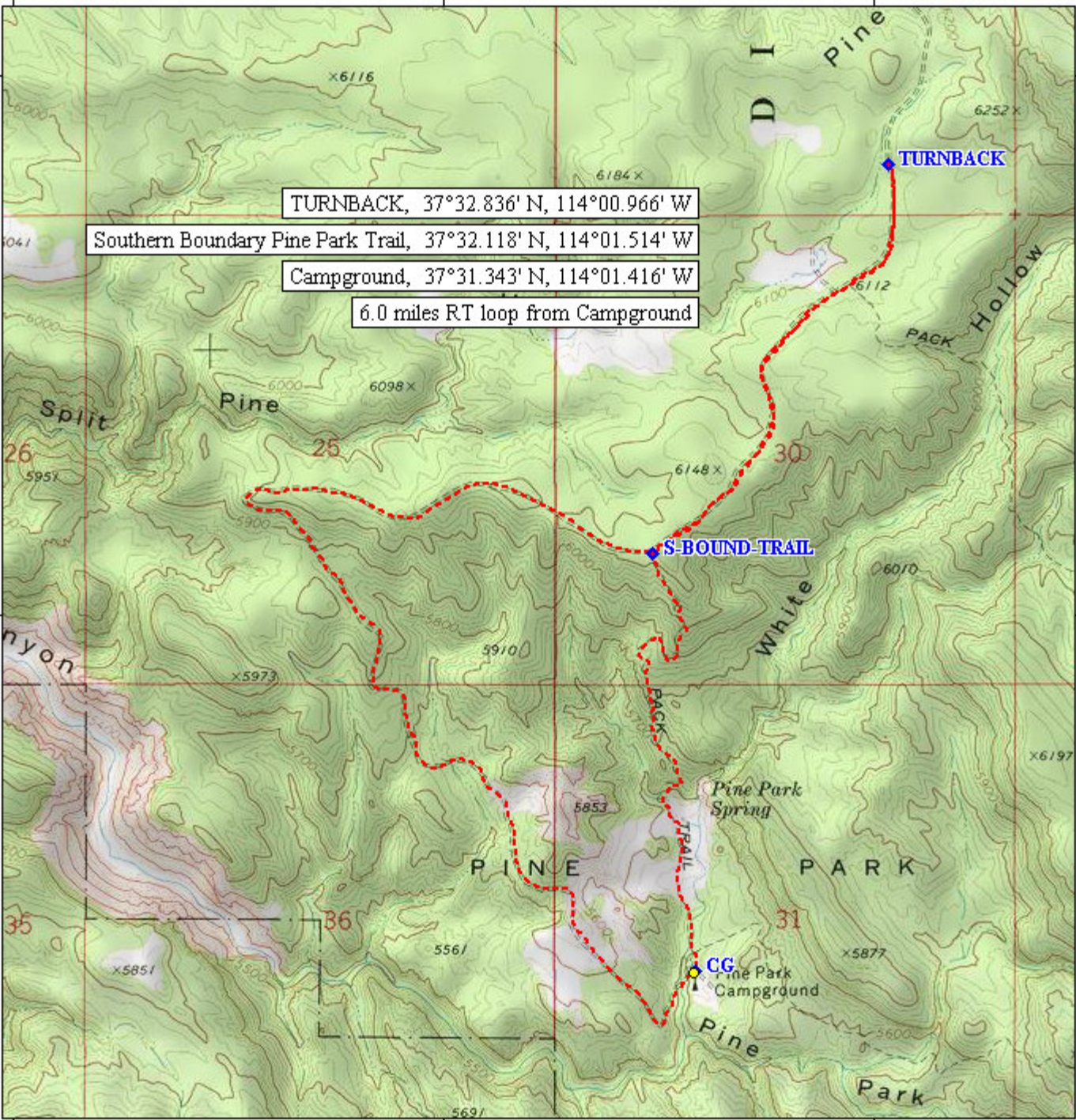
WGS84 114°01.000' W

37°33.000' N

37°33.000' N

37°32.000' N

37°32.000' N



TURNBACK, 37°32.836' N, 114°00.966' W

Southern Boundary Pine Park Trail, 37°32.118' N, 114°01.514' W

Campground, 37°31.343' N, 114°01.416' W

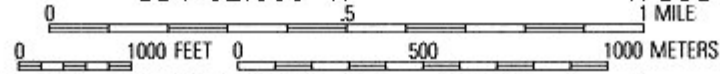
6.0 miles RT loop from Campground

114°03.000' W

114°02.000' W

WGS84 114°01.000' W

TN/MN
13°



Printed from TOPO! ©2000 National Geographic Holdings (www.topo.com)

